

Maryland's Climate Pathway

Kennedy, K. et al. (2023) *Maryland's Climate Pathway: An analysis of actions the State can take to achieve Maryland's nation-leading greenhouse gas emissions reduction goals.* Center for Global Sustainability, University of Maryland. 118 pp. <https://www.marylandsclimatepathway.com>



Science Question

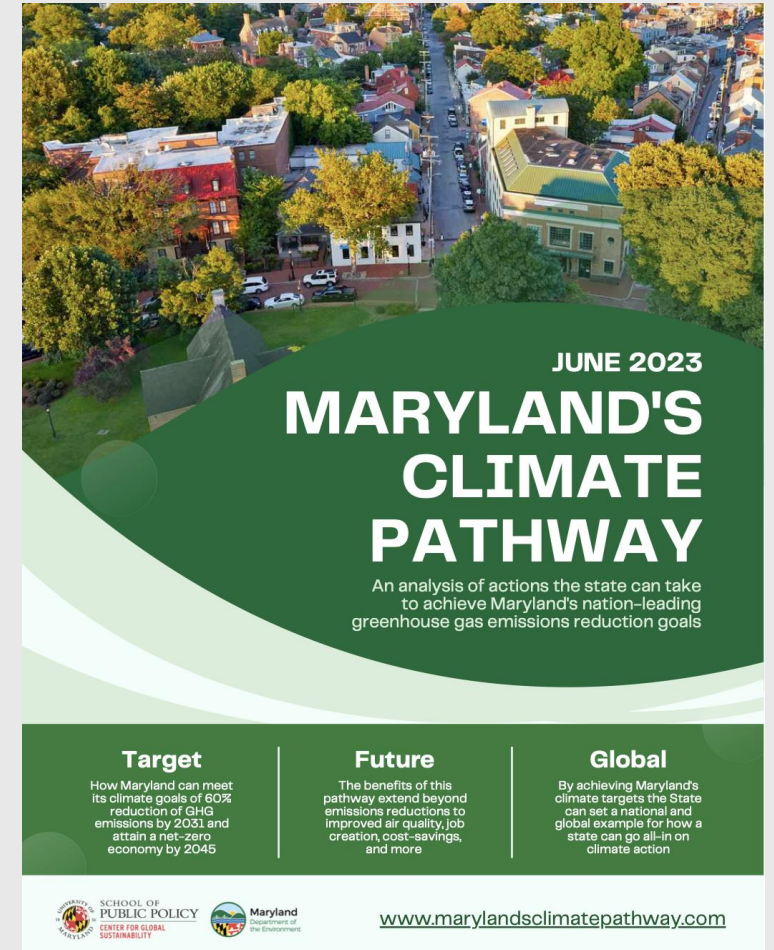
- The Climate Solutions Now Act (CSNA) sets Maryland's sights high— the highest in the United States— with a goal of a 60% reduction in greenhouse gas (GHG) emissions by 2031 relative to 2006 levels and a net-zero emissions economy by 2045.
- How can the state reach those goals, while realizing additional benefits for Marylanders?

Analysis

- Maryland Department of Environment partnered with the state's leading scientists to develop this report and identify a pathway to achieve Maryland's ambitious climate goals.
- Potential emissions reductions were evaluated and the most efficient paths to meet the State's GHG reduction targets were identified.
- The strategy employed a globally recognized integrated assessment model with a thorough evaluation of individual policies and climate actions across all sectors and society to ensure the accuracy and consistency of the pathway.
- The NASA-CMS high-resolution forest carbon monitoring system, previously adopted by the state, was used as basis for forest carbon projections.

Results/Significance

- Maryland can meet its ambitious climate goals all while realizing health and economic benefits, including improved air quality, new jobs, and household cost savings.
- Maryland can do this through the coordinated implementation of current and new policies across each sector of the economy, combined with a strong federal partnership and a broader all-of-society approach that integrates actions from cities, counties, local jurisdictions, business and industry leaders, community organizations, and more.
- The forestry and land use sector is a critical sector for offsetting emissions across the rest of the economy. As the largest annual net carbon sink in this sector, many policies focus on preserving, managing, and growing forests.



Acknowledgements

NASA Carbon Monitoring System under award number 80NSSC21K1059 (forest carbon)